

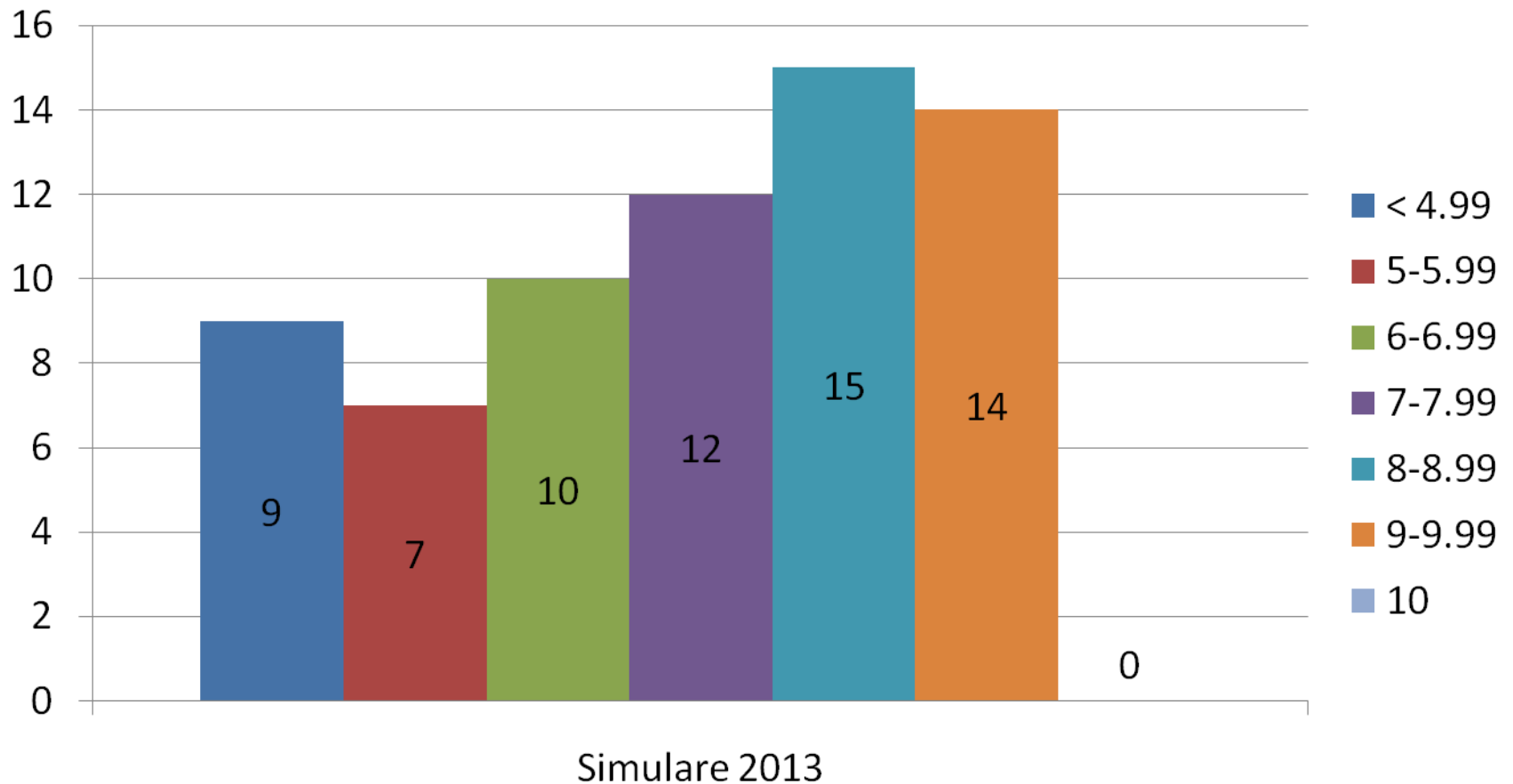
Rezultatele simularii examenului de Evaluare Nationala

Rezultatele simulării examenului de Evaluare Nationala- Romana Aprilie 2013

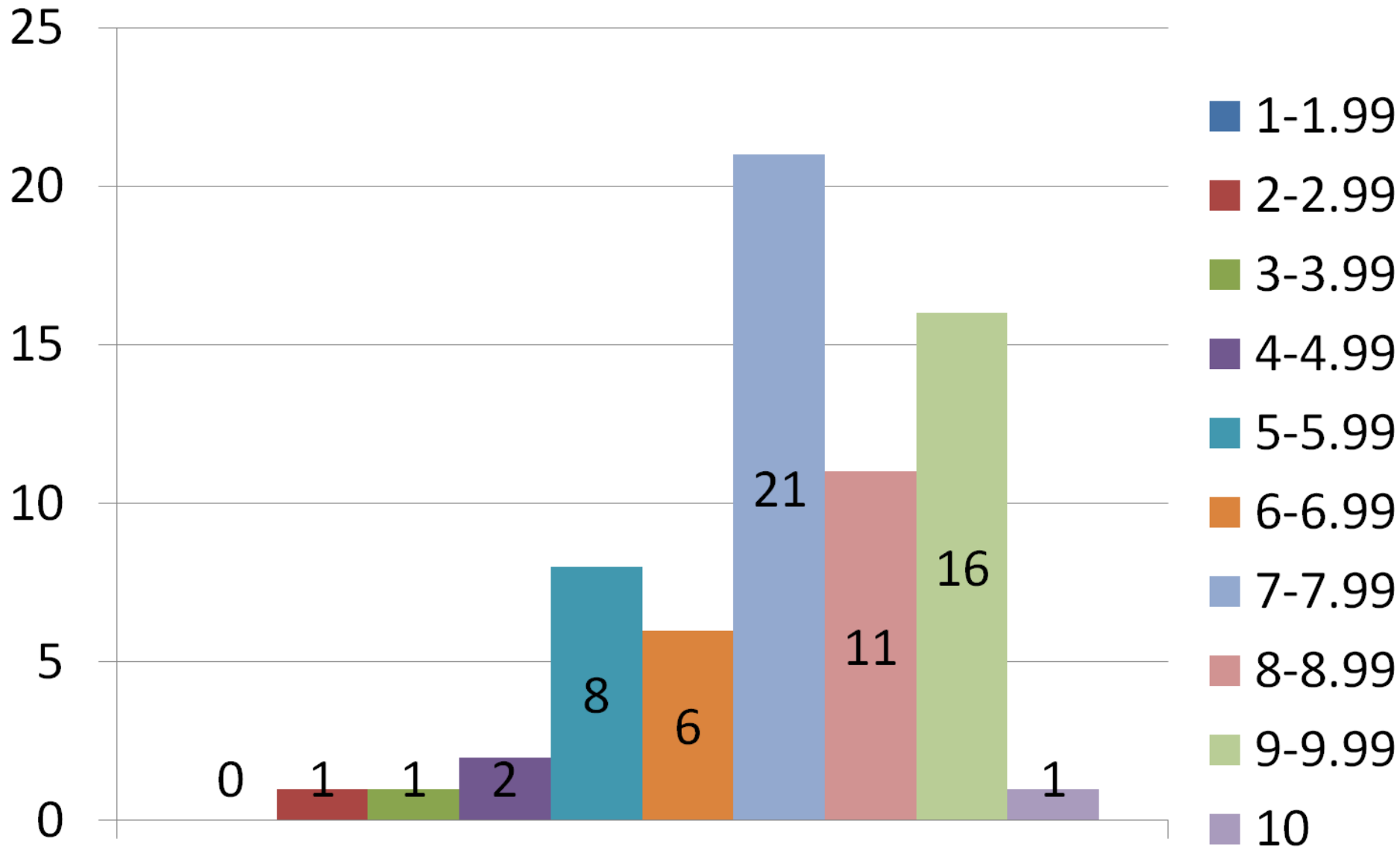
Clasa	Profesor	Nr elevi existenti in clasa	Nr. elevi prezenti	Nr. elevi neprezentati	Nr. elevi eliminati	Numar de candidati respinsi	Numar de candidati reusiti	: din care cu medii:						Promovabilitate
								5-5.99	6 - 6.99	7 - 7.99	8 - 8.99	9 - 9.99	10	
a VIII a A	Sevastru Bogdan	24	24	0	0	1	23	1	4	3	7	8	0	95.83%
a VIII a B		25	25	0	0	3	22	4	4	6	4	4	0	88.00%
a VIII a C		19	18	1			5	13	2	2	3	4	2	0

Concluzii:

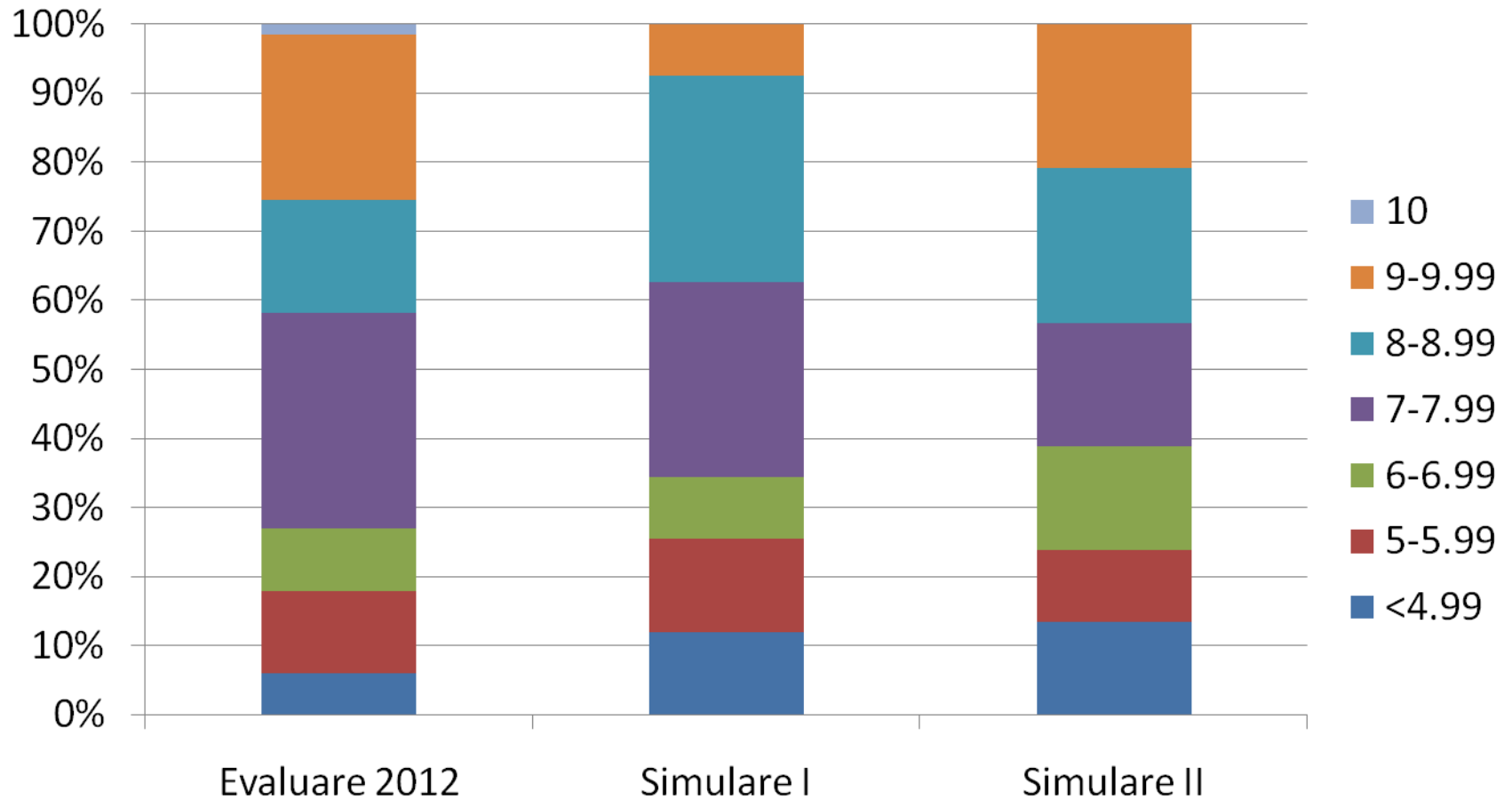
- la simulare au participat 67 de elevi
- media : 7,17



Notele obtinute la examenul de Limba si literatura romana 2012



Comparativ Limba Romana

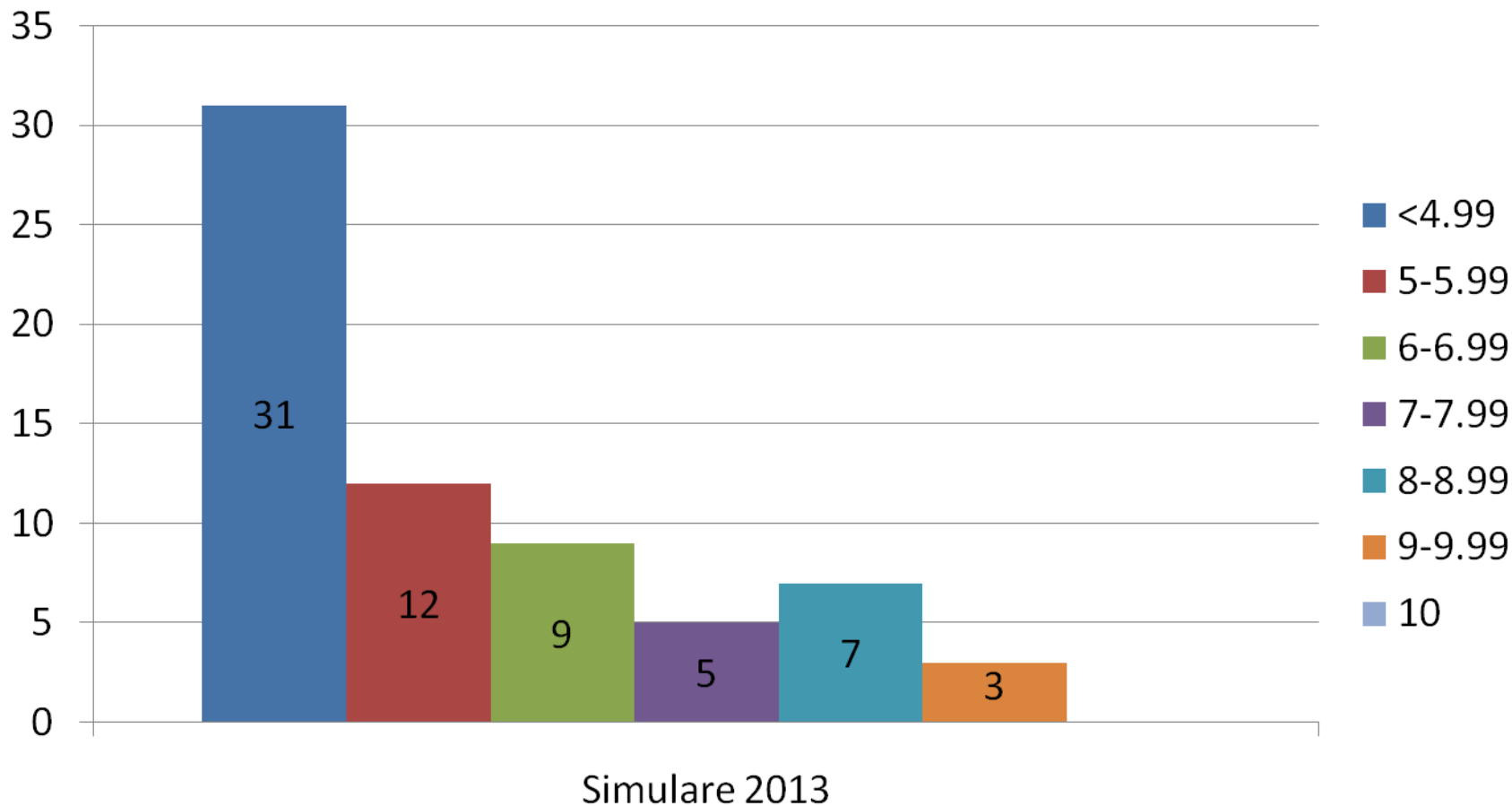


Rezultatele simulării examenului de Evaluare Nationala- Matematica Aprilie2013

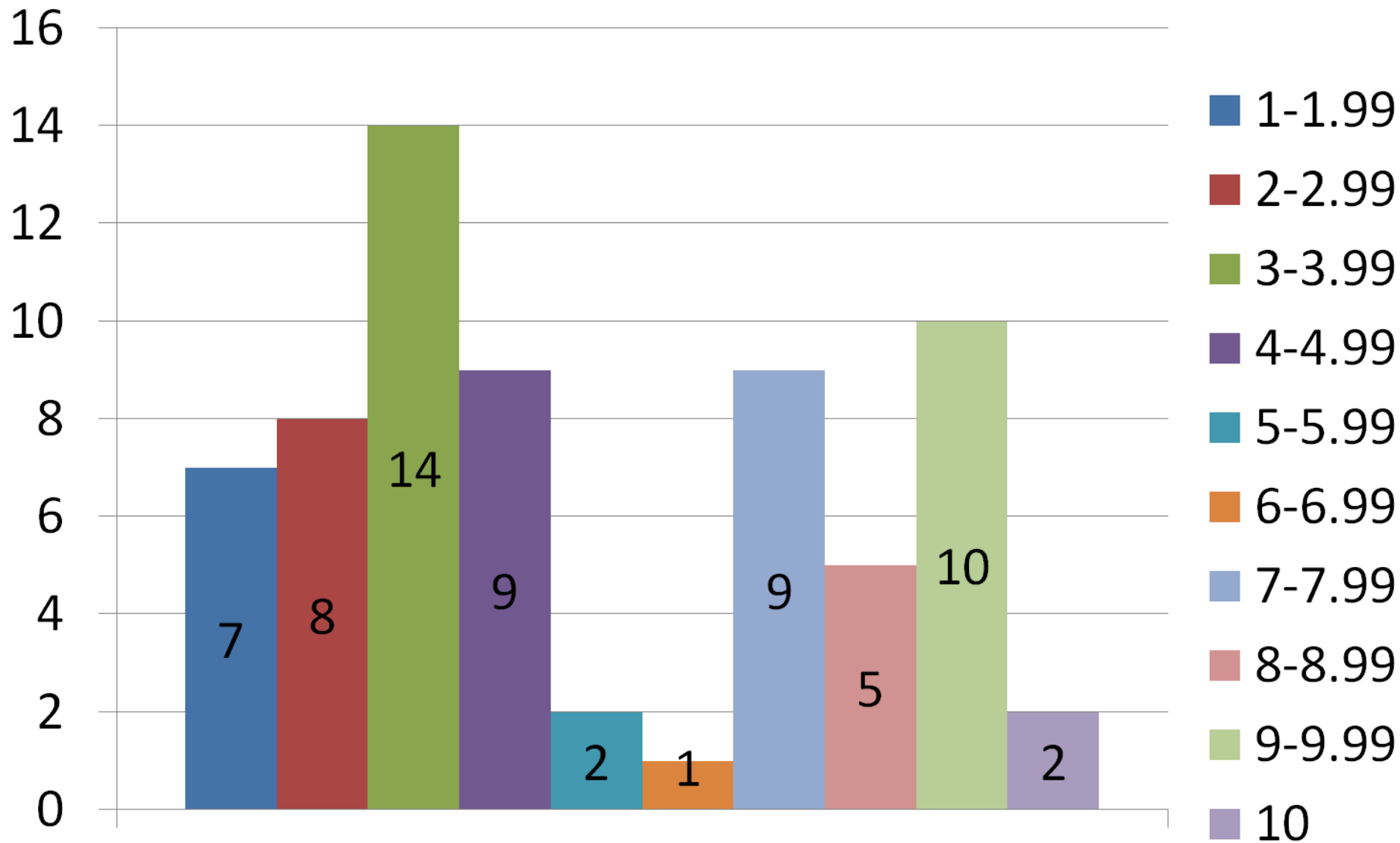
Clasa	Profesor	Nr elevi existenti in clasa	Nr. elevi prezenti	Nr. elevi ne reprezentati	Nr. elevi eliminati	Numar de candidati respinsi	Numar de candidati reusiti	: din care cu medii:						Promovabilitate
								5-5.99	6 - 6.99	7 - 7.99	8 - 8.99	9 - 9.99	10	
a VIII a A	Manolescu Rodica	24	24	0	0	5	19	6	4	3	4	2	0	79.17%
a VIII a B	Popescu Elvira	25	25	0	0	13	12	4	3	2	2	1	0	48.00%
a VIII a C	Popescu Elvira	19	18	1		13	5	2	2	0	1	0	0	27.78%

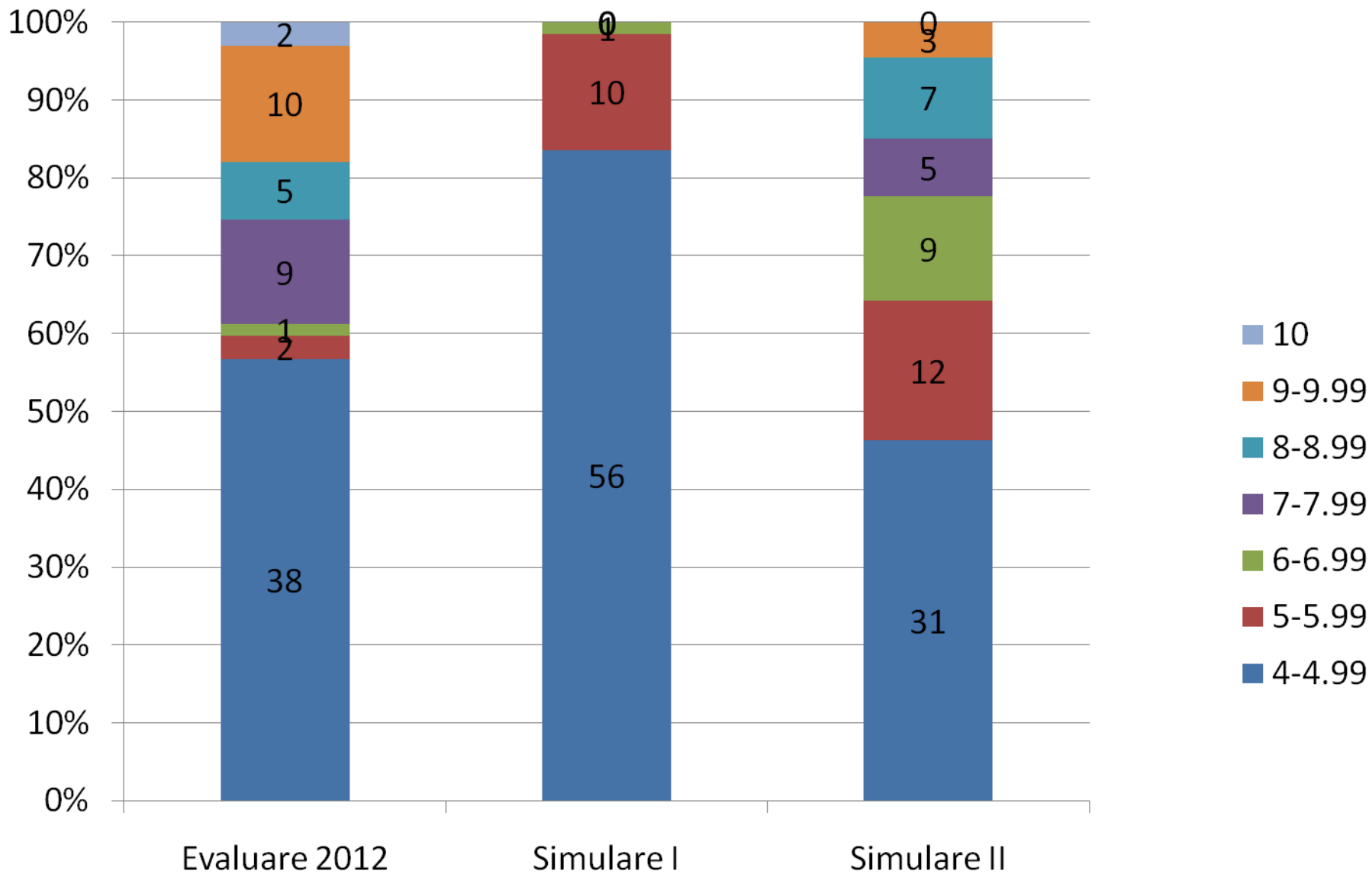
Concluzii:

- la simulare au participat 67 de elevi
- 36 elevi au avut medii peste 5
- media : 5.21



Notele obtinute la examenul de Matematica 2012





**Media generala in cea
de a doua simulare 6.25**

